

Press release, Tuesday June 4, 2024

Reopening of the Nancy-Contrexéville (Grand Est region, France) railway line

A symbolic meeting in the heart of the Vosges officializes the reopening of this essential line for the Grand Est region.

- **The consortium comprising NGE, Transdev and Banque des Territoires (Caisse des Dépôts Group) has been awarded the public service concession for the Nancy - Contrexéville railroad line by the Grand Est region.**
- **This is a first in two respects: it is the first rail contract awarded by the Grand Est region since the opening up to competition, and the first contract in France to be operated under a new model, enabling a single service provider to operate the rail service and manage the rail infrastructure.**
- **Closed since 2016, this essential regional line will be brought back to life thanks to a 22-year partnership between NGE Concessions, Transdev and Banque des Territoires (Caisse des Dépôts Group). This reopening represents a crucial step in the opening up to competition, as well as a powerful symbol for the attractiveness of the western Vosges region. Soon, there will be 30 daily return trips between Nancy and Contrexéville.**

On Tuesday June 4, 2024, **Franck Leroy**, President of the Grand Est Region, **Thierry Mallet**, Chairman and CEO of Transdev, **Edouard Hénaut**, CEO of Transdev France, **Magali Debatte**, Regional Director Grand Est Banque des Territoires, **Thierry Bodard**, President of NGE Concessions, were welcomed by **Yves Séjourné**, Mayor of Mirecourt, and **Franck Perry**, Mayor of Vittel, Vice-President of the Vosges Departmental Council, to officialize the reopening of regional line 14.

This event marks the culmination of several years' efforts to get the line back on track.

"Reopening a line is a reaffirmation of our commitment to the regions, their accessibility and their attractiveness. It is also the mark of a Region committed to providing its inhabitants with transportation services everywhere and for everyone. Today, this relaunch paves the way for the rehabilitation of other lines, with the aim of opening up the entire Grand Est rail network to competition by 2033." **Franck Leroy**, President of the Grand Est Region

"This is a new page in the history of Line 14, a sign of confidence that the Région Grand Est has placed in us, and very good news for Transdev. Thanks to our international experience, particularly in Germany and Sweden with commuter trains, we'll be able to help revive the Nancy - Contrexéville line. Mobility is an essential topic in suburban and rural areas. Transdev is proud to contribute to the revitalization of these areas in the Grand Est region, by working with its partners NGE and Banque des Territoires to

renovate the infrastructure, provide rail services and operate the line, ensuring quality service from 2027." **Edouard Hénaut**, Managing Director Transdev France

"Banque des Territoires is delighted to have been chosen, along with Transdev, a subsidiary of Caisse des Dépôts Group, and NGE, by the Grand Est Region to reopen line 14, serving the Vittel and Contrexéville area from Nancy. For the renovation, operation and maintenance of this line, the local authority has opted for an innovative arrangement that is unprecedented in regional rail in France. The Grand Est region has embarked on a resolute policy of developing its own rail services, in particular by regenerating its regional lines, which contribute to enhancing the accessibility and attractiveness of its regions. We are delighted to support this ambition for more sustainable mobility and greater regional cohesion, in line with our strategic priorities."

Magali Debatte, Regional Manager Grand Est Banque des Territoires

"The Grand Est region has clearly expressed its desire to revitalize line 14, and we are proud to have been chosen to support it in this objective of developing sustainable, low-carbon mobility in the region. This reopening is in line with the promotion of operator diversity called for by the Loi d'Orientation des Mobilités, and we are convinced that such projects will contribute to developing the mobility offer and the role of rail operators for the benefit of users. Alongside Transdev and Banque des Territoires, backed by the expertise of its subsidiaries NGE Concessions and TSO, NGE has seized this first opportunity, and we are ready to position ourselves for future operations."

Thierry Bodard, Chairman of the concession company and Chairman of NGE Concessions

The agreement will be signed in June, and will come into force on July 1, 2024. Comprising NGE Concessions (50%), Transdev (20%), la Banque des Territoires (Caisse des Dépôts Group) (30%), the concession company is working alongside the Grand Est Region to reopen the Nancy – Contrexéville line, offering a comprehensive solution covering the financing, design-build and maintenance of the rail line, as well as the operation of the rail service, with commitments to a high level of service within the framework of a 22-year public service concession, including three and a half years of construction work.

Three and a half years of works for €150m

Nine NGE Group subsidiaries will be involved in the design-build phase. TSO, leader, TSO SIGNALISATION, OFFROY, SAGES RAIL for the railway part, MULLER TP, NGE GC and SLD TP for earthworks, networks and civil engineering. NGE INGENIERIE is responsible for the design, alongside SETEC and JFS Architectes. NGE will also be in charge of major maintenance and renewal for the duration of the concession.

The three and a half years of works will consist in particular of track regeneration and renewal of the railway platform, rehabilitation work on the various engineering and hydraulic structures, installation of an automated and centralized signaling system, safety work on level crossings and modernization of the stops.

A rail hub will be created in Mirecourt, housing the maintenance and storage site as well as the concession's operating premises.

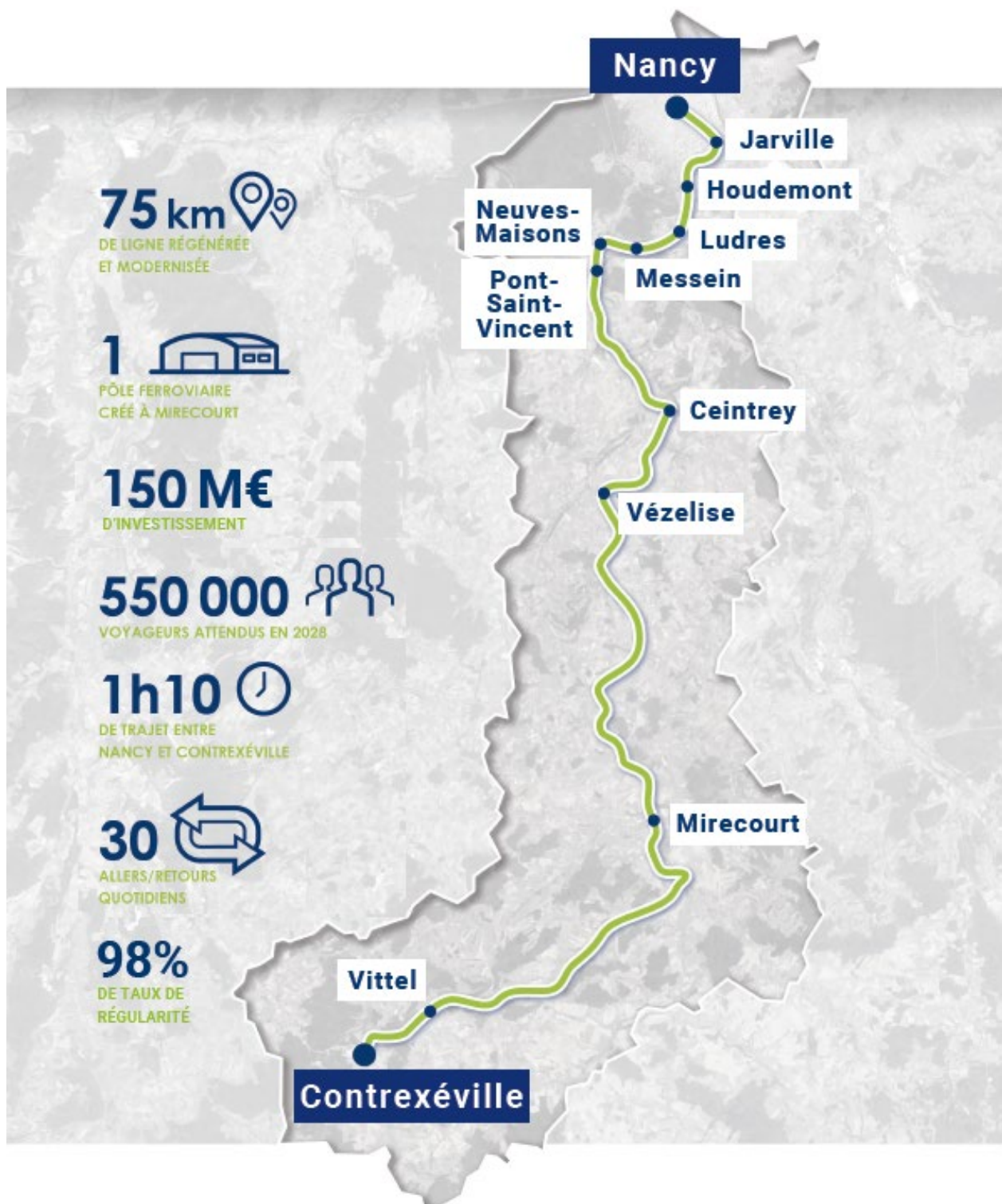
All this work, which represents up to 300 jobs, will be carried out in cooperation with regional economic players and with minimal environmental impact.

Operating costs over the concession period estimated at €14 M p.a.

The operating company (75% Transdev Rail, 25% NGE Exploitation) will be responsible for the operational management of train movements, maintenance and safety on the line. This represents 65 permanent local jobs, including 23 train drivers. Around 30 round trips a day will be operated between Nancy, Pont-Saint-Vincent and Contrexéville, with a strong commitment to service levels and, in particular, punctuality. As a result, from December 12, 2027, Contrexéville will be just one hour and 10 minutes away from the heart of Nancy, with 30 daily round trips, compared with 6 before the line was closed in 2016.

Key figures for the Nancy-Contrexéville line

- 75 km of line regenerated and modernized
- 1 railway hub created at Mirecourt
- 550,000 passengers expected at opening
- 1h10 between Nancy and Contrexéville
- 30 round trips per day on the line :
 - including 16 return trips from Nancy to Pont-Saint-Vincent
 - including 14 return trips from Nancy to Contrexéville (which also pass through Pont-Saint-Vincent on the way to Contrexéville and return to Nancy)



About TRANSDEV

As an operator and global integrator of mobility, Transdev – The mobility company – empowers freedom to move everyday thanks to safe, reliable and innovative solutions that serve the common good. Following the acquisition of First Transit, Transdev carries 12 million passengers daily, thanks to its various efficient and environmentally friendly modes of transport and employs more than 102,000 women and men serving its passengers, thus consolidating its

position as world leader in public transportation. Transdev is jointly held by Caisse des Dépôts Group (66%) and the Rethmann Group (34%). In 2023, present in 19 countries, the Group generated total revenues of €9.3 billion. For more information: www.transdev.com

About Banque des Territoires (Caisse des Dépôts Group)

Banque des Territoires is one of Caisse des Dépôts' business lines. It brings together the Group's in-house expertise for the benefit of the territories. A single point of contact for its customers, it works alongside all local players: local authorities, local public enterprises, social housing organizations, legal professions, businesses and financial players. It supports them in carrying out their public-interest projects by offering a continuum of solutions: advice, loans, equity investments, consignments and banking services. By reaching out to all regions, from rural areas to metropolitan areas, Banque des Territoires aims to maximize its impact, particularly in terms of ecological transformation and social and territorial cohesion. Banque des Territoires' 37 local offices ensure that its actions are deployed throughout metropolitan France and the French overseas territories. Working together to develop greener, more cohesive territories.

About NGE

NGE - Nouvelles Générations d'Entrepreneurs - is the 4th largest construction group in France, building major infrastructures and urban or local projects. With its expertise in financing, design, construction and maintenance, the Group has become a benchmark player in the construction of structures adapted to local economic and ecological challenges. These include the development of low-carbon mobility, in which TSO, the Group's rail subsidiary, is directly involved, with numerous references in major projects (LGV) and urban public transport. NGE's entrepreneurial drive is supported by a solid employee shareholder base (founders, management and employees hold 72% of the Group's capital), backed by the French investment fund Montefiore (28% of the capital).

Media contacts

- NGE: Eloi Fouquoire, eloi.fouquoire@gmail.com, +33 6 76 77 11 56
- Transdev : Olivier Le Friec – olivier.le-friec@transdev.com, +33 610 60 58 45
- Banque des Territoires (Caisse des Dépôts Group): Joëlle Lagrange, joelle.lagrange@caissedesdepots.fr, +33 6 30 80 13 86
- Grand Est region: Julie Saucède, julie.saucede@grandest.fr, +33 6 74 08 42 30